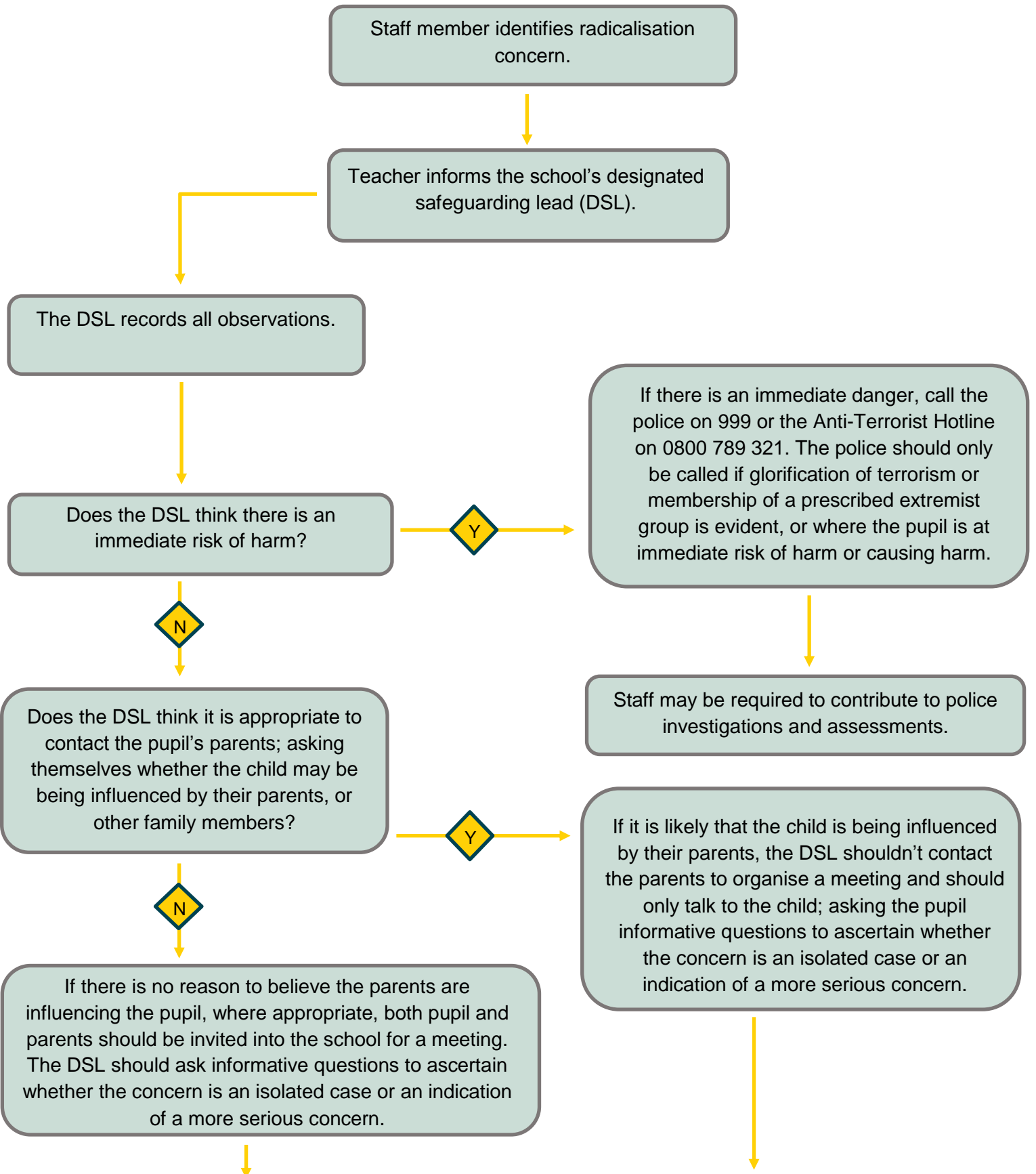


## Prevent duty reporting process



In both instances, the DSL must assess whether the concern is isolated or not. If it is a serious concern or a repeated incident, the DSL should contact the local Prevent practitioner. If it is an isolated incident or not a serious concern, the DSL should continue to monitor the situation. Serious concerns refer to any incident that may result in harm upon the pupil, or the pupil causing harm to others.

Do the DSL and local Prevent practitioner deem the concern to be serious? If so, reporting the concern to the Channel programme may be appropriate.

Y

Staff members should be informed that they may be asked to liaise with the local Channel programme panel to discuss the referred pupil and to determine whether support is required.

The LA's Channel programme panel, in liaison with panel partners such as the school, must decide which support, if any, is required and arrange for this support to be implemented.

N

If no referral is made, the pupil should be monitored by the DSL and the teacher who initially reported the concern. If new concerns arise, in liaison with the local Prevent practitioner, the DSL should monitor all concerns and assess the measurement of vulnerability before referring concerns which are deemed serious.

If the DSL deems it is unnecessary to refer the concern to the Channel programme and a teacher disagrees, a teacher may make the referral themselves but must notify the DSL of the referral.

The DSL should follow up any referrals; the DSL must record and retain all incidents for the school record.